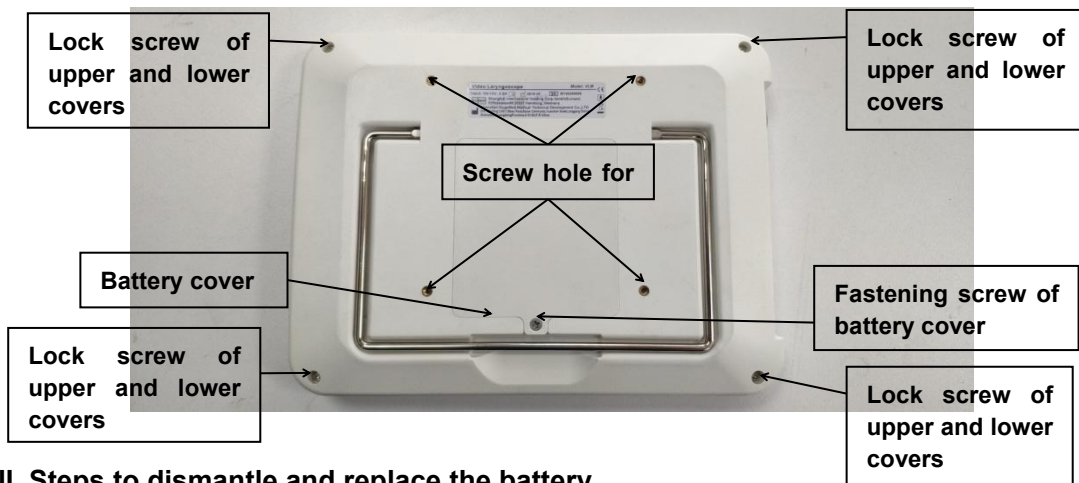
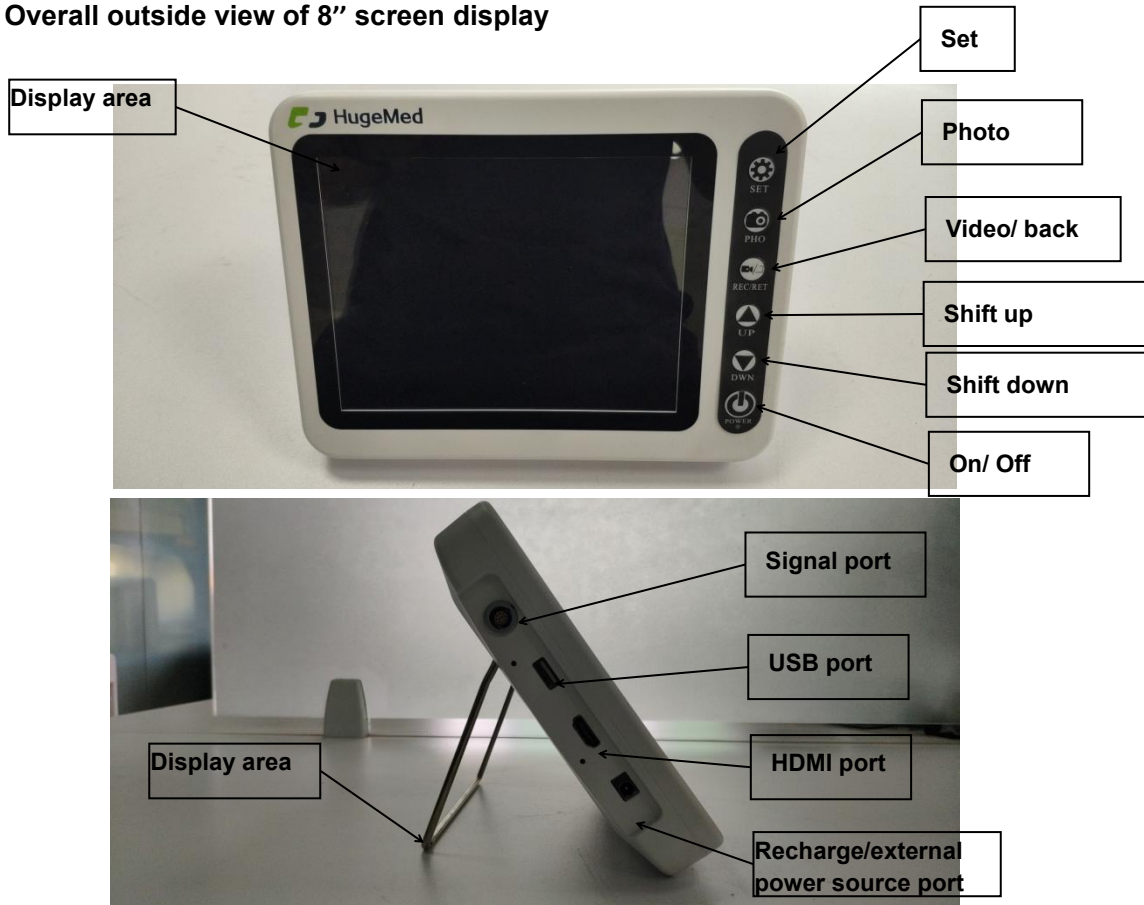


Maintenance Instruction

I. Overall outside view of 8" screen display



II. Steps to dismantle and replace the battery

1. Check that the device is powered off before dismantling the battery. See the following pictures. First remove the fastening screw of battery cover, which is a M3*6 cross countersunk head screw, and then pry up the battery cover by hand gently to remove the battery cover, as shown on the following Figs. 2.1, 2.2 and 2.3.

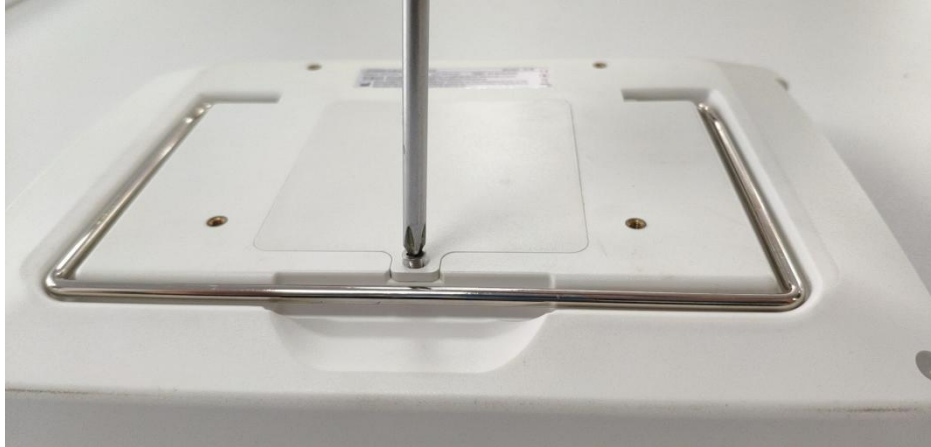


Fig. 2.1



Fig. 2.2

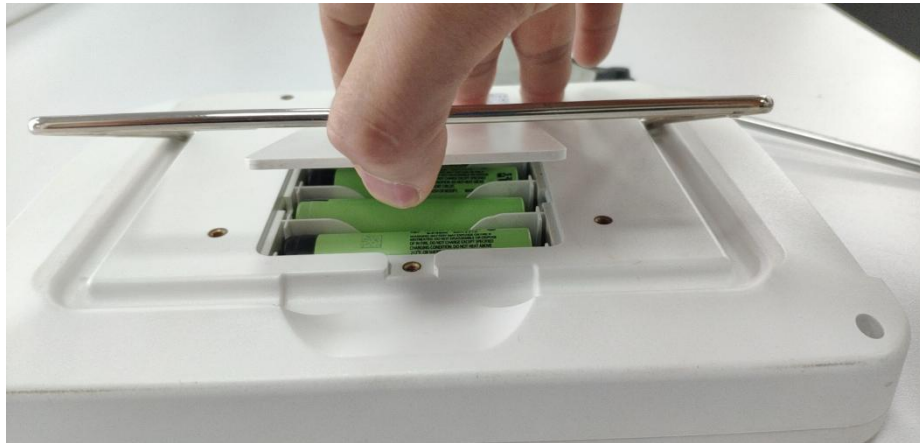


Fig. 2.3

2. Put your hand or a blunt object at the gap between the positive pole of battery and the battery compartment, and then pry up the battery gently to replace the battery as shown on the following Figs. 2.4 and 2.5.



Fig. 2.4



Fig. 2.5

3. After the battery is replaced, confirm the positive and negative poles of battery, align its negative pole with the negative leaf (with spring) in the battery compartment, make sure that the circular center of negative leaf is almost aligned with the battery, press the battery lightly to compress the negative leaf spring, and next press the positive pole of battery fully into the battery compartment as shown on the following Figs. 2.6, 2.7 and 2.8.



Fig. 2.6

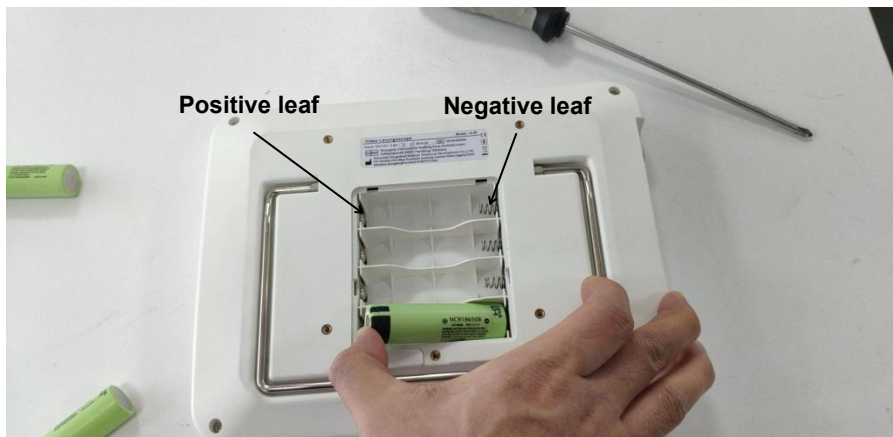


Fig. 2.7



Fig. 2.8

4. After four batteries are installed in the battery compartment, refit the battery cover, and install the fastening screw of battery cover as shown on the following Figs. 2.9, 2.10 and 2.11.



Fig. 2.9



Fig. 2.10

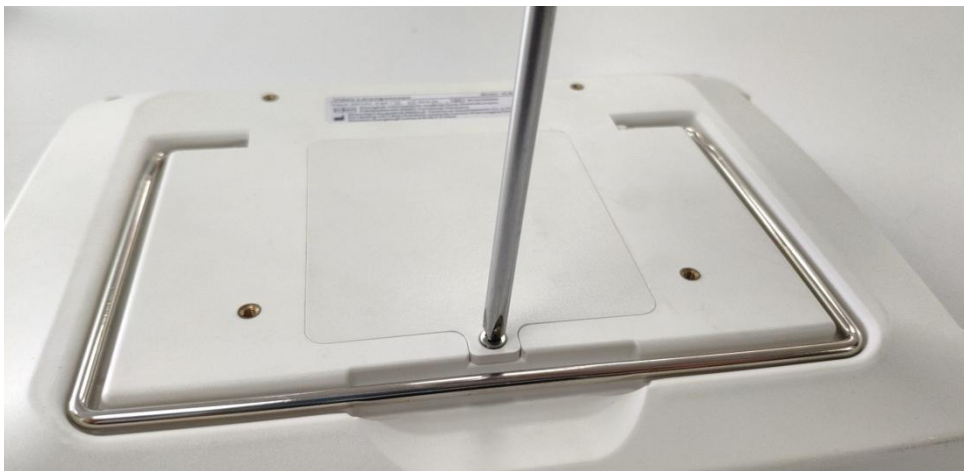


Fig. 2.11

III. Steps to dismantle and replace the LCD screen

1. Use a cross screwdriver to remove 4 lock screws of upper and lower covers as shown on the following Fig. 3.1.



Fig. 3.1

2. Push a tweezer into the gap between the upper and lower covers at the corner near the screen print on the upper cover, then push the tweezer into the gap at the other corner to separate the two covers, and next open the upper and lower covers lightly to separate them from each other for a given angle. See Figs. 3.2 and 3.3.



Fig. 3.2

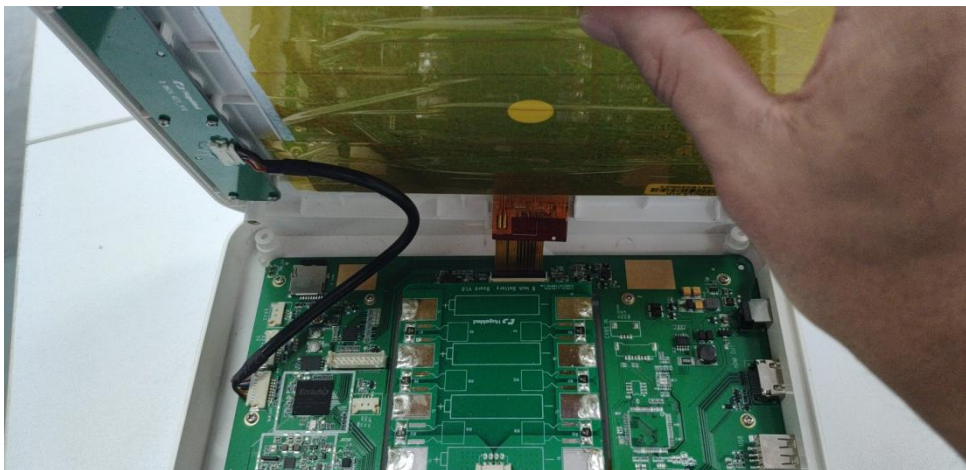


Fig. 3.3

3. Find the screen wire holder on the main board, lift up the joint of screen wire holder by hand lightly to separate the screen wire from the screen wire holder on the main board, and separate the connecting wires of keys on the upper cover from the holders on the main board to separate the upper cover from the lower cover completely. See the following Fig. 3.4.

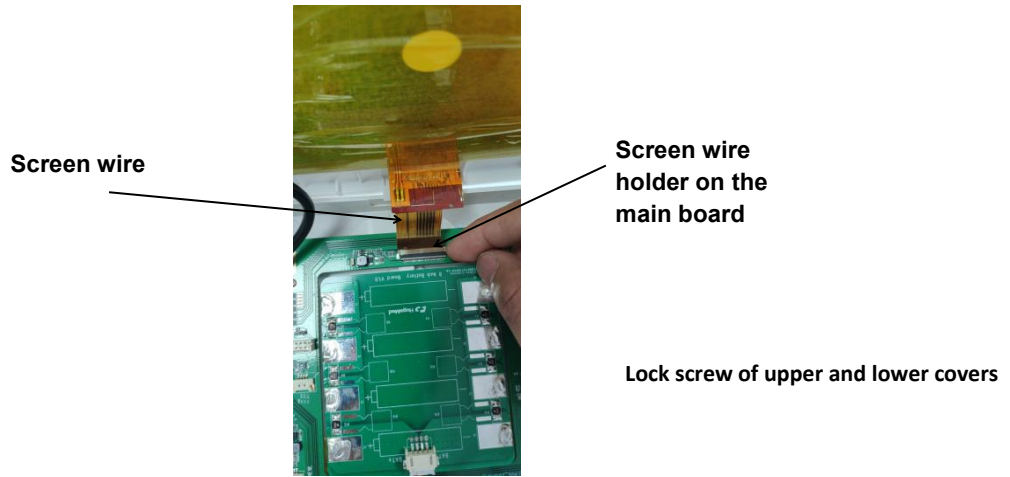


Fig. 3.4

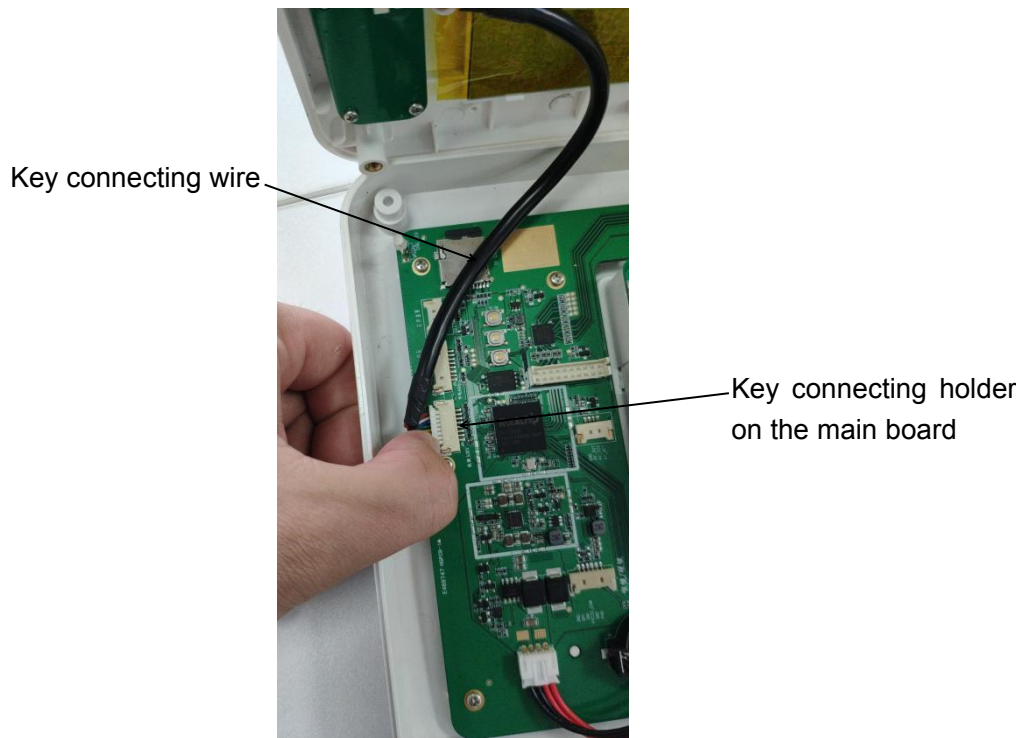


Fig. 3.5

4. Hold the upper cover in hand, find two clips fastening the screen, pry a clip gently at a corner where the screen is fastened to separate one edge of the screen from the clip, and then separate another edge of the screen from the other clip at another corner by the same method; afterwards, the screen can be dismantled completely and replaced. See the following Fig. 3.6.

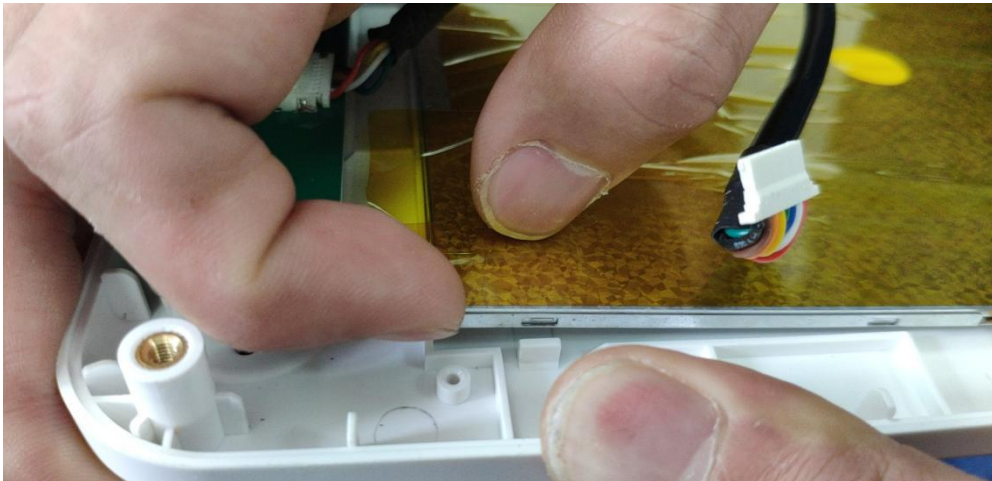


Fig. 3.6

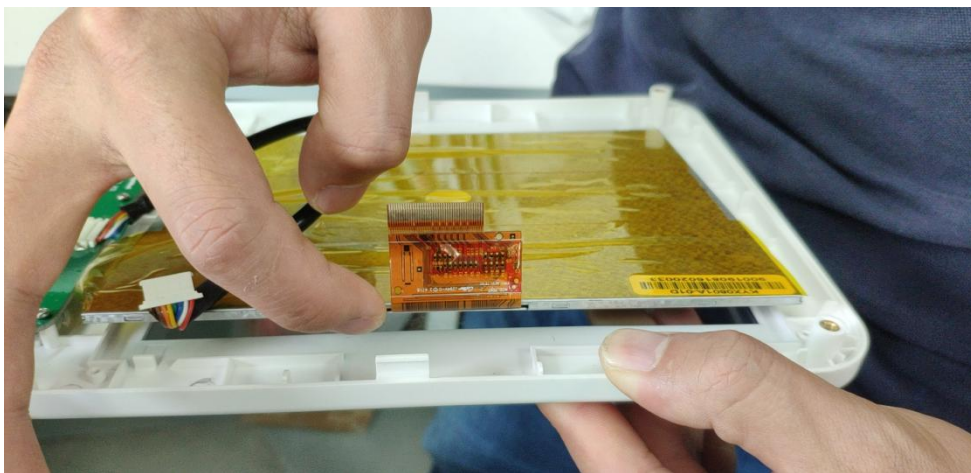


Fig. 3.7

5. After the screen is replaced, a new screen can be installed by the opposite operations.

IV. Steps to dismantle and replace the main board

1. First remove the LCD screen, and then use a cross screwdriver to remove 8 screws fastening the main board and lower cover in sequence, as shown on the following Fig. 4.1.



Fig. 4.1

2. After the screws are removed, separate the power wire and signal wire from the main board respectively by hand as shown on the following Figs. 4.2 and 4.3.

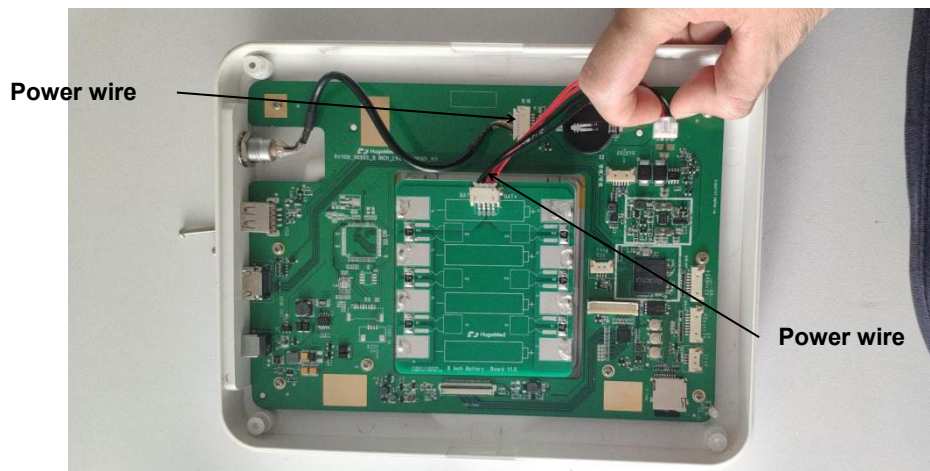


Fig. 4.2



Fig. 4.3

3. Put one finger on the side of main board without connector at the position as shown on the following Fig. 4.4; then lift up one side of main board gently for a given angle as shown on the following Fig. 4.5; next hold the main board by hand gently, and move it to the right top to dismantle the main board.

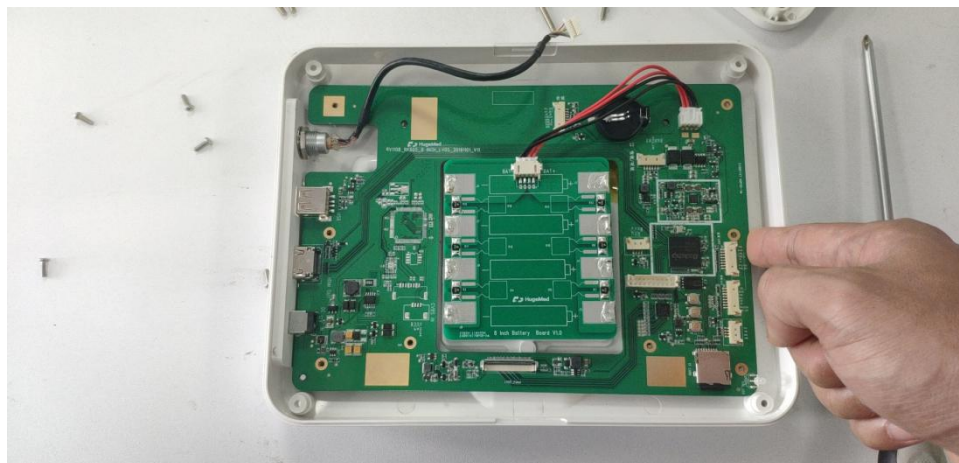


Fig. 4.4



Fig. 4.5

4. The steps to refit the main board is opposite to its dismantling steps.