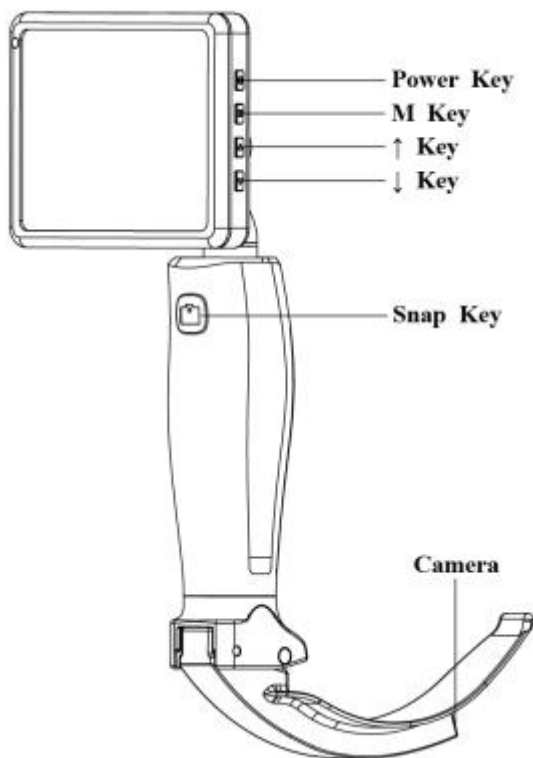


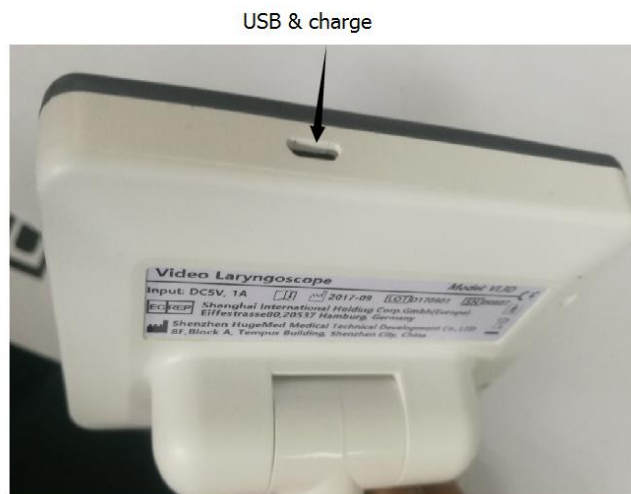
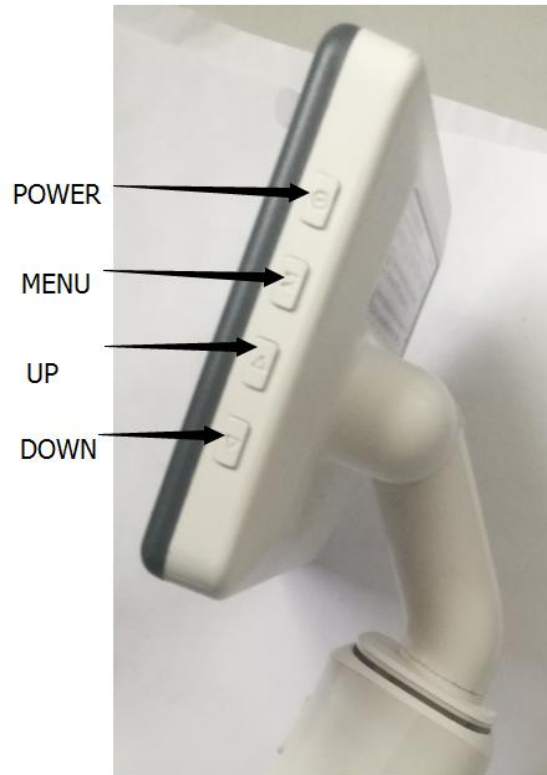


Video Laryngoscope Service Manual

**Shenzhen HugeMed Medical Technical Development Co.,LTD
8F, Block A, Tempus Building
1st Qingshuihe Road, Luohu District
Shenzhen City, Guangdong, China
www.HugeMed.net**

No.1 : Photo of Video Laryngoscope





No.2 : How to change battery

1. Make sure power is off before changing batteries. Please reference pictures below. Use thin blade to pry the gap between dust cap and handle. To avoid plastic components damage, please handle gently and slowly.





2. Unplug the dust cover (IMAGE 1) and remove the six screws on the cover plate (IMAGE 2) and take down the cover plate (IMAGE 3)



IMAGE 1

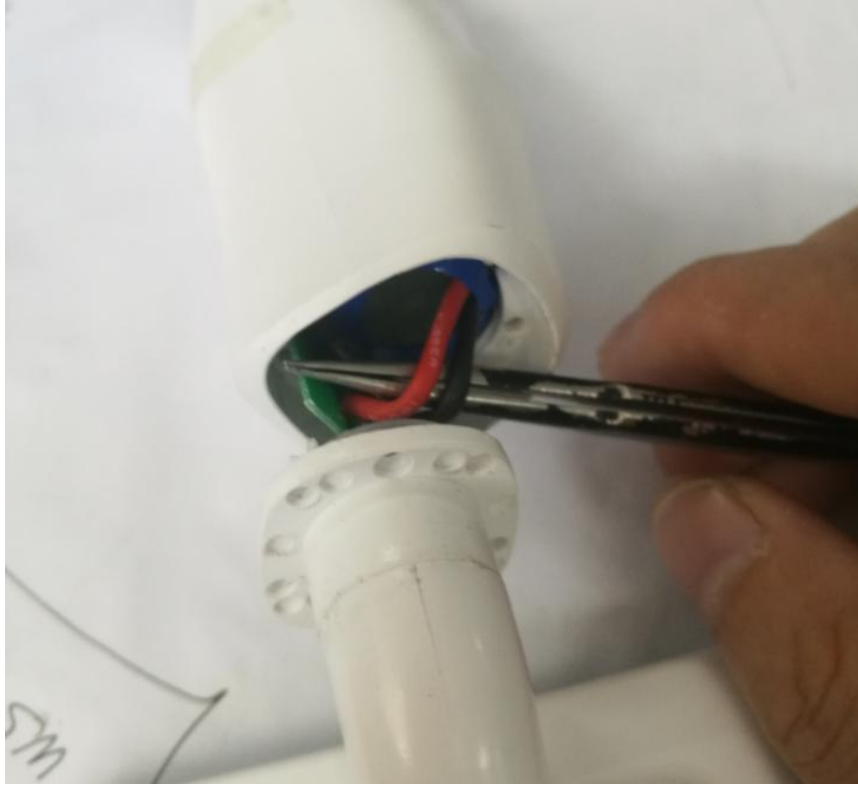


IMAGE 2

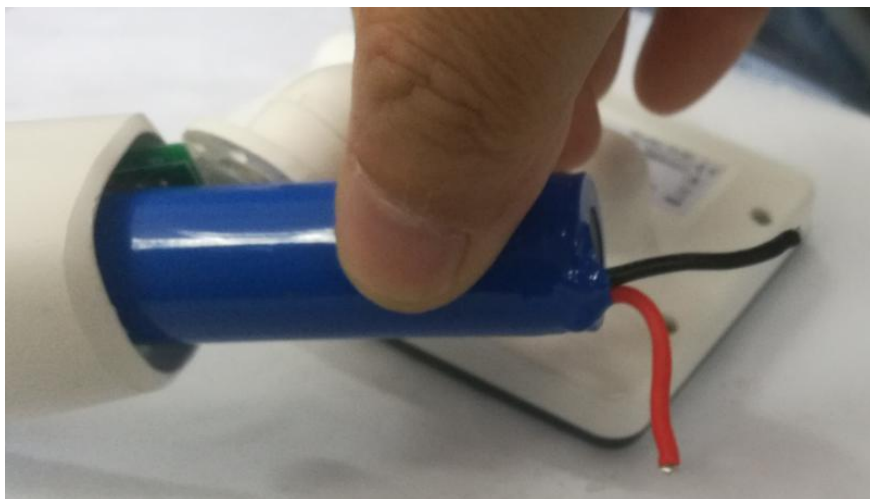


IMAGE 3

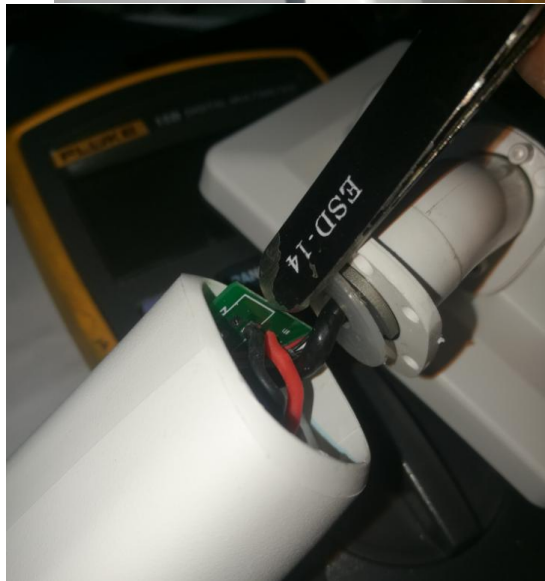
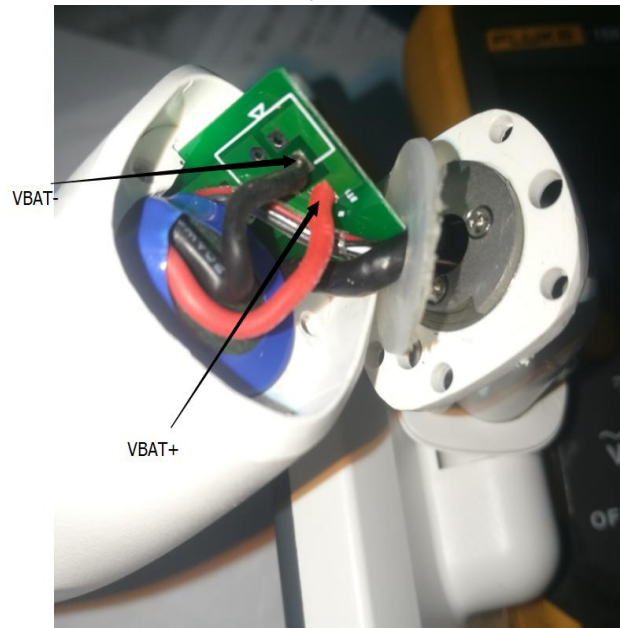
3. Use tweezers to pull out the PCB board slowly until you can see the welding spot of the battery wires.



4. Use electric soldering iron remove the red and black wires, one spot one time to avoid short circuit. Now you can take out the battery slowly.



5. Put the new 18650 battery into the handle as the below image and put the black and red wire insert the pad holes orderly, weld red wire(VBAT+) and black wire(VBAT-). Press the green PCB into the card slot until it is paralleled with the handle side.



6. Put the screws back on the plate and press the dust cover down to the handle and press it until smallest visible gap there.



No.3 : How to change the LCD display

1. Take out the two screws on backside of the display



2. Push the gray board with thumb around 1.5mm along with the white back board until see the gap between the display and the white back board.



3. Use fingernail to apart the gray board and same for the other side.



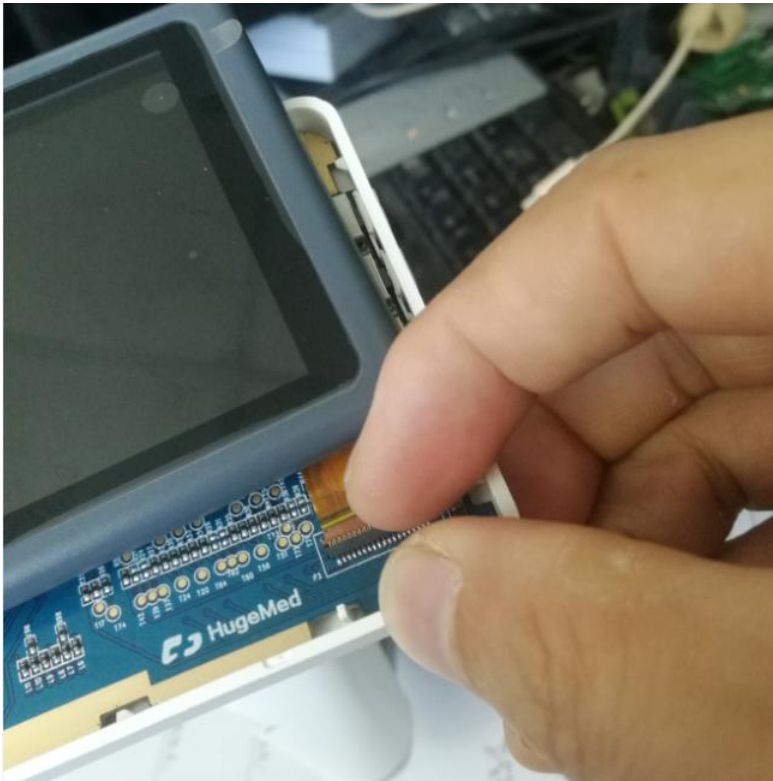
4. There are two ways to dismantling the LCD connector for 2 different models.

A. Steps to remove LCD front cover:

1) Open the display and take off the acetate tape by tweezers.



2) Open the yellow slip joint with fingernail carefully.



3) Take off the display from the PCB slowly.



4) Steps to put the LCD back on: clean the dust with dryer sheets, insert the display wire into the display connector tightly and fix the slip joint.

B. LCD back cover disassemble steps

- 1) Open the black slip joint with fingernail carefully.



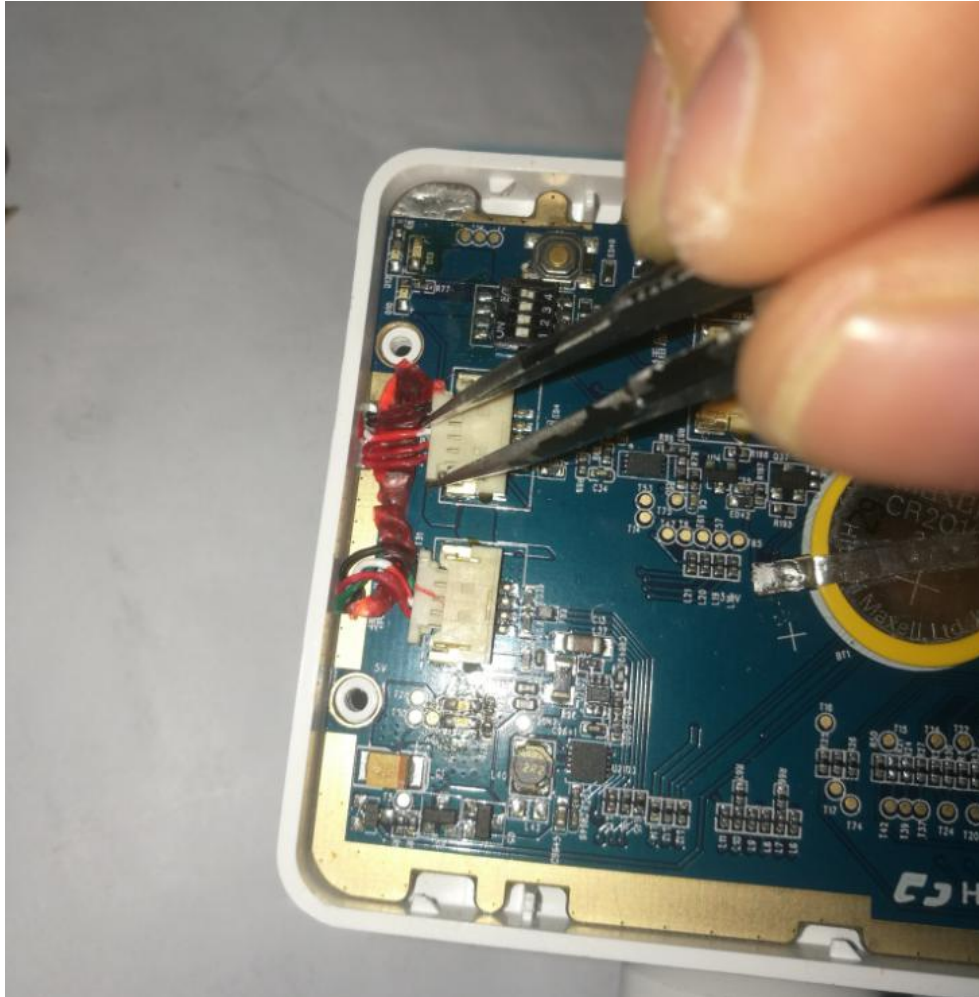
- 2) Take off the LCD display from the PCB slowly.



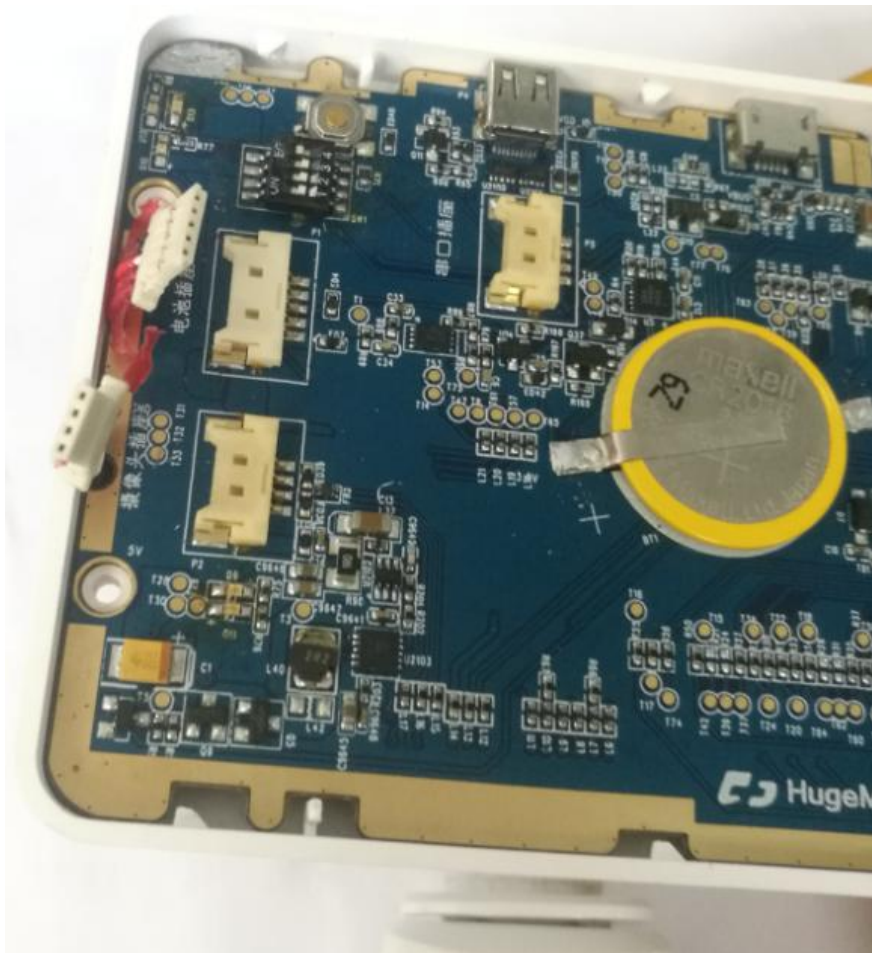
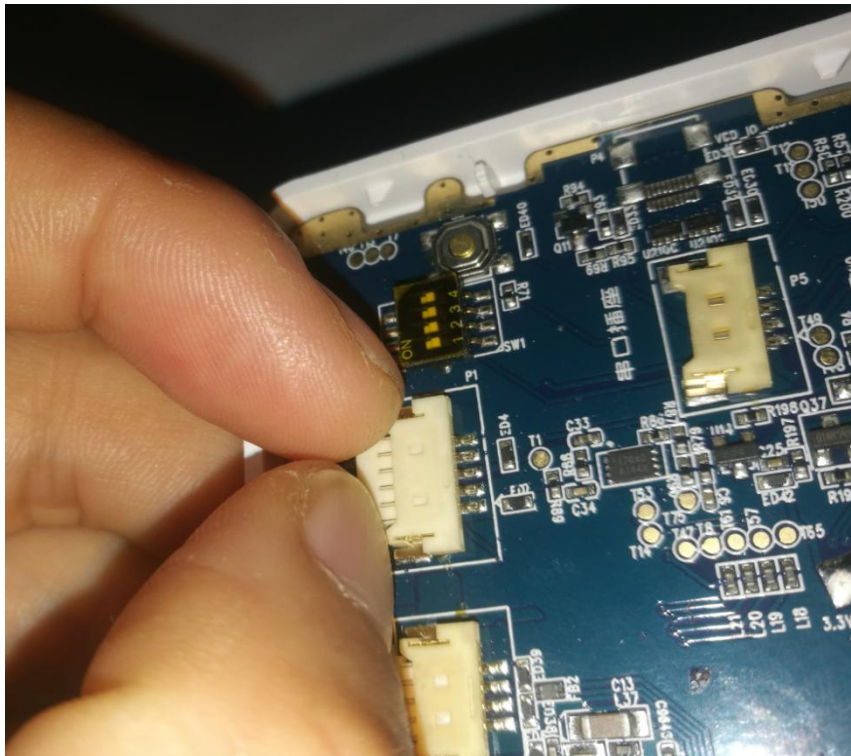
- 3) Put the LCD back on, clean the dust with dryer sheets, insert the display wire into the display connector tightly and fix the slip joint

No.4 : How to change the PCB board

1. Remove the LCD display, separate the red glue from the wire to isolate the PCB



2. Take off the 5P battery connector and the 4P camera connector.



3. Take out the PCB with tweezers as below.



No.5: PCB Assembly Steps:

1. Prepare the new PCB, put the right side under the four buttons first, and press the buttons to check the hand feeling.



2. 4P and 5P wire put into the card slot



3. Insert the 4P and 5P into the corresponding connector.



4. Put back the LCD(see before steps)

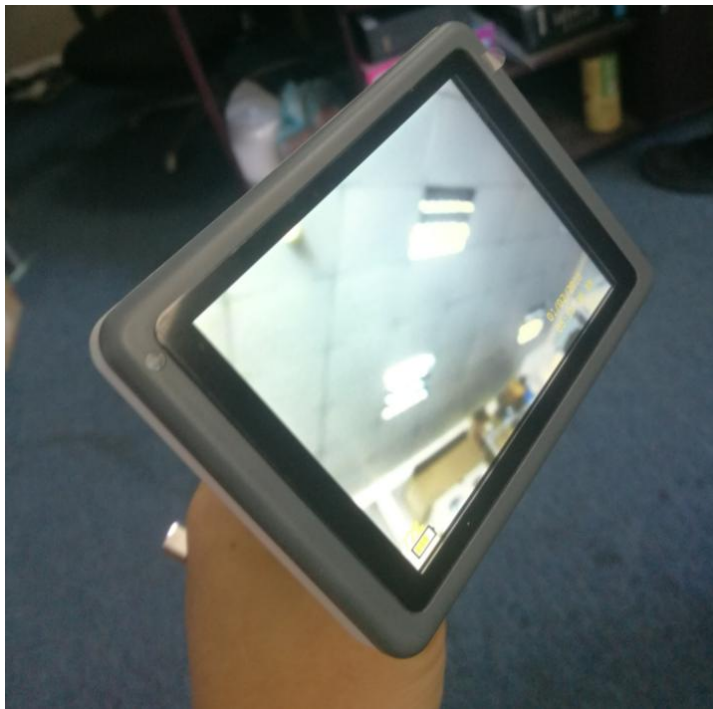
5. Malposed assemble of the dark grey front cover and bottom cover, front cover higher than bottom one.



6. Push the dark gray board forward until can't there is no gap between the gray board and the white back board.



7. Press Power button for 5 seconds to power on to check the display, camera, USB charger etc.



8. Put into the screw if all the function is workable.

No.6: Solution for simple problems

Problem	Fault cause	Solution
Can' t power on	Low Battery	Charge more than 8 hours for the first time use.
Can' t charge with battery charging light on	Low Voltage of Device	Power off and Charge more than 4 hours.
Battery charging light is off	low Voltage in the charging socket.	1.Check the power socket .2, Check the USB cable .
Camera LED flicking	Low Voltage of Battery	Charge the battery